



PROJECT CROW CREEK

“Community Revitalization”
2009



“We believe with the opportunity and relevant support,
that the American Indian Communities, such as the Crow Creek Reservation,
can utilize their intellect, dedication, compassion, and character to
reclaim their dignity, self-reliance, and restore their cultural heritage.
All of which are such important parts of our nation’s history.”

Eric Klein, Founder - CAN-DO



ABOUT CAN-DO

CAN-DO is a 501c3 relief organization dedicated to working on the local level to provide lasting solutions, with full accountability, efficiency, and results. Never before has our world faced such devastation, from environmental degradation to genocide, natural disasters to glaring educational crises worldwide. With the social sectors currently laden with bureaucracies and inefficiencies, with little accounting as to the amount of aid actually reaching those affected by disaster or social strife, CAN-DO is committed to working with communities to ensure lasting impact, with absolute transparency, and absolute results.

CAN-DO achieves its goals by first living its values. Through the work of CAN-DO on the front- lines, we set the standard for effective, accountable, transparent, and community-based initiatives. Every project has a clearly defined goal and specific measurable outcomes determined in conjunction with the local community that validate the effectiveness of the programs. Additionally, CAN-DO is committed to publishing complete, transparent accounting of all funds donated for each and every project and working with the donors at every level of the programs through CAN-DO's Virtual Volunteer™ Programs.

CAN-DO understands that the challenges of this world are far greater than our capacity to execute on projects. Therefore, we believe that our largest impact is the development and expansion of the CAN-DO Network. The CAN-DO Network is a community of social entrepreneurs, philanthropic organizations, socially responsible businesses, and program partners who are committed to working together to “Get it Done,” truly putting compassion into action.

CAN-DO identifies, encourages, supports and develops each organization in the CAN-DO Network to ensure maximum positive change worldwide, each organization committing to CAN-DO's Pledge of Accountability & Results to ensure maximum outcome for the communities we serve. We are committed to providing a platform to highlight this constructive change through CAN-DO Productions. Lastly, the CAN-DO Network will continue to evolve as the industry marker for effective philanthropy and community-based change.



Crow Creek Overview

Reservation: Crow Creek Reservation; Buffalo, Hyde, and Hughes Counties

Division: Santee, Yankton

Bands: Mdewakanton (People of Spirit Lake), Ihanktonwan (People of the End)

Land Area: 125,591 acres

Tribal Headquarters: Ft. Thompson, SD

Traditional Language: Dakota

Enrolled members living on reservation: 1,230

Total Number estimate of residents 2,439

Major Industry: Agriculture

Average Annual Household Income: USD \$5,000

Average Unemployment Rate: 75-80%

Life Expectancy: 44 (male), 47 (female) - The lowest life expectancy in the world

Infant Mortality Rate: 200 x the national average

Charter: None; Constitution and Bylaws: Yes

Date Approved: April 26, 1949

Name of Governing Body: Crow Creek Sioux Tribal Council

Number of members: six (6) council members

Dates of Constitutional amendments: February 25, 1963, June 23, 1980, February 4, 1986

Number of Executive Officers: (1) Chairman

Situation:

CAN-DO has recently completed an on-site assessment at the Crow Creek Reservation in South Dakota to gather evidence on the current living conditions endured by the local community. The CAN-DO assessment team gathered extensive information through conducting thorough interviews, shooting video footage and raw photographic imagery straight from the source. The direct documentation and assessment process is essential for CAN-DO in establishing the most effective and efficient approach that results in lasting relief for the impoverished community of Crow Creek; preserving their dignity, restoring their self-reliance, and revitalizing their culture.

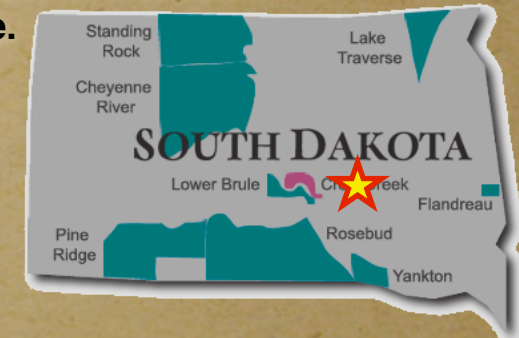
The evidence is undeniable. Deep shame surfaces in the reality of the blatant abuse and human rights violations that occur here, in the United States, on a daily basis. Socioeconomic disparity and the fundamental denial of equal opportunity have generated a community of Americans on a burning decline. Electrical power companies illegitimately manipulate prices and disconnect heat during arctic winter months. Lack of plumbing, clean water, and access to fresh, unprocessed foods has led to staggering rates of illness, disease and death. With our nation's head turned, the community has been blatantly denied the opportunity to work, run their businesses, or be self-reliant resulting in soaring poverty rates, deteriorating educational facilities, and deficient health services. And yet the people of Crow Creek are determined to reverse this situation and regain their self-reliance.

There are numerous systemic issues that must to be addressed on the Crow Creek Reservation now. CAN-DO is focused on working with the local community to meet their immediate survival needs while promoting long-term sustainability, improved quality of life, and community revitalization through comprehensive, community-led solutions. CAN-DO has launched a national awareness campaign to mobilize individuals, companies, organizations, and government to join together to address these egregious violations of human rights, while developing and implementing sustainable solutions utilizing the skills and ability of the people in the region. Thorough accountability and effective engagement of partners such as yourself enables local people to enable themselves. Together we can build a community-based model to revitalize this community and restore our nation's heritage.

Your investment in community-led solutions promotes livelihood development, cultural restoration, community empowerment, environmental preservation, and long-term economic stability. Right here at home.

Community Overview

The people of the Crow Creek Sioux Indian Reservation in South Dakota are faced with severe human rights violations being committed by companies, government, and even utilities. Countless years of racism have institutionalized nearly insurmountable barriers to employment opportunities: currently the region is facing an unemployment rate between 75-80%; the annual household income stagnates at \$5,000 – 11% less than the national average.





Project Objectives and Description

Project Title: Project Crow Creek - 2009 *"Restoring a Culture"*

Region: Crow Creek Sioux Indian Reserve, South Dakota

Countries of Benefit: The United States of America

Source of Finance: Donations/Grants

Budget:

Duration:

Accountability Mechanism: VirtualVolunteer.tv/CAN-DO.org



Purpose of the Project

The people of the Crow Creek Indian Reservation live in dire poverty and poverty is a direct violation of a human right. The United Nations Development Program defines poverty as: 'the denial of opportunities and choices most basic to human development – to lead a long healthy creative life and to enjoy a decent standard of living, freedom, dignity, self-esteem and the respect of others.' The people on this reservation are denied these opportunities. They are further burdened with the electrical company illegitimately turning off their power during the cold winter months, adding to this vicious cycle of poverty and cultural genocide.

Issues Addressed by the Project

1. American Indian Rights/Human Rights
2. Poverty Eradication
3. Sustainable Energy
4. Education
5. Child welfare
6. Health

Goals

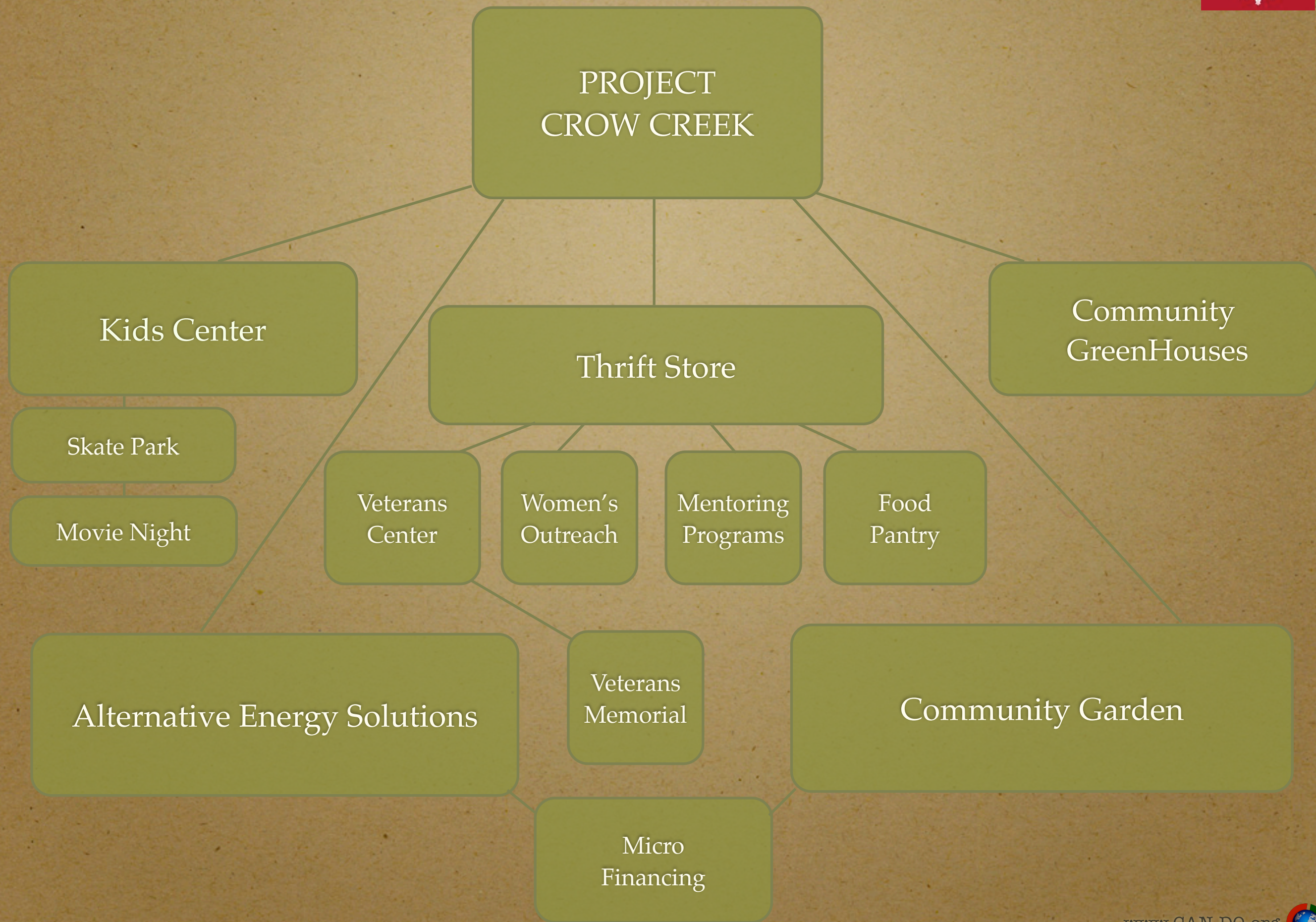
1. Raise awareness of the critical nature of the issues at the Crow Creek Reservation and mobilize the teams and resources necessary to effectively execute the projects.
2. Address the immediate survival needs of the community.
3. Work with the community to introduce relevant, long-term solutions for sustainability, economic growth and cultural preservation.

Plan of Action

With a long-standing track record and proven approach to providing lasting solutions with full accountability, efficiency and results, CAN-DO approaches the crisis on the Crow Creek Reservation at the local level. Dedicated to listening to the voice of the people, CAN-DO has launched a national awareness campaign to address the urgent human rights abuses taking place in the South Dakota region. It is crucial that while funds are raised, that the immediate survival needs of the community are effectively met. The project is a call to action - everyone's help is needed to make it happen.

By performing the detailed assessment process in the local region, CAN-DO was able to determine key projects based on their severity, potential for reversal, community involvement, long-term impact, and viability. In addition, with the participation of the residents, including an enthusiastic youth contingent, these vital projects focus on making 'hopes' a reality and restoring the American Dream to its people. Together, we will shine a deserving national spotlight on the struggle of the people at Crow Creek and eradicate these reprehensible injustices, building a more sustainable future.





Energy Crisis



Problem

Despite the fact that both a hydroelectric dam and wind generators are in the immediate vicinity - both built on tribal land - the Crow Creek residents are billed a third more than the regional average for their electricity, with average monthly bills exceeding \$300. CAN-DO has been asked by the community to negotiate a solution to the frequent electrical disconnections taking place in the frigid winter months.

Because of the sensitive, legal nature of this issue, we have called upon our representatives to put an end to these abuses. CAN-DO has contacted representatives at all levels of government to mobilize them to take immediate action against those perpetrating these horrific abuses on American citizens.

CAN-DO has concurrently launched a national awareness campaign to build broad public awareness to address these critical issues.



Alternative Energy Solutions

Solution

CAN-DO is working with community leaders to research and implement clean energy sources that will create self-sufficiency and energy independence.

CAN-DO welcomes ethical individuals and organizations with appropriate technologies to help these communities to develop sustainable solutions. CAN-DO is seeking funding for this program to restore the vitality and freedom of this great nation that holds the greatest potential for wind power in the entire continental US.





Youth Activity Center



Lead Organization: CAN-DO
Budget: \$60,000

Problem:

Due to the complete lack of recreational facilities for the children and youth of the reservation, the community has expressed the deep necessity for a youth activity center to support the project's overall goal of community empowerment and development. Without constructive outlets for their energies, there are high rates of substance abuse, suicide, and depression amongst the youth. The rate of suicide among American Indians aged 10-14 is almost four times higher than other minority groups. The facilities and youth development programs that are there have been condemned and even lack basic electricity.

Solution:

CAN-DO aims to work with the community leaders to build self confidence and a real understanding that positive change is possible in the minds of the children through the development of the Youth Activity Center. The Center will provide opportunities for young people to develop their physical, cultural, spiritual, emotional, social, and intellectual abilities through character building, recreational programs, leadership development, and inter-generational relations.

To the Lakota people, strong emotional, mental, spiritual, and physical well-being is critical in rearing self-sufficient children who can go on to lead productive adult lives. A Youth Activity Center is a critical component in that development to help strengthen the next generation and the community's cultural heritage. With the integration of cultural traditions and strong family and community bonds, the youth are able to keep their minds, bodies, and spiritual selves healthy, thus reducing the rates of depression and suicide.

- Community-Built – Locals are eager and prepared to begin as supplies are donated.
- Community-Run – The center will be community driven and focused.
- Youth Empowerment – Classes, computers, activities, mentoring, language classes, cultural heritage activities.





Community Greenhouses

Lead Organization: CAN-DO

Coordinator: Cosmo Pfeil



BUDGET: Per Greenhouse: \$2,772

CAN-DO has developed the Community Greenhouse Initiative to provide a replicable, community-based model that provides fresh, locally grown fruits, vegetables, and herbs for the local community while also promoting an additional source of revenue. The Community Greenhouse will provide a model of **BACKYARD BUSINESS** where the community members are able to nourish their own families and have a sustainable source of income. The Greenhouse Initiative extends to local families who express interest in building and learning how to operate their own greenhouses, and then have the opportunity to introduce these skills to neighboring communities.

An environmentally-sound greenhouse will help to provide a much needed nutrition element to the local diet. The Greenhouse Initiative will provide raw unprocessed fruits, vegetables and grains year round. The underground “Root Cellar” component of the greenhouse will allow for late harvest vegetables to be consumed through winter months and, where possible, brought to market for resale. It is our hope that in addition to feeding the community, the greenhouse program will eventually lead to the resale of native Dakota heirloom and specialty items in the national marketplace.

The Greenhouse is an environmentally-conscious design that incorporates a below-ground root cellar for late-season drying and winter storage. In the interest of maintaining a warm growing climate, the greenhouse is aerodynamic and well insulated to protect from the high winds and extremely low temperatures of the South Dakota prairie. We have chosen a straw-bale construction to support and insulate our greenhouse with a thick polycarbonate solar panel to passively heat the micro-climate. The Greenhouse should provide an extended growing season to allow for the early planting of seedlings and sprouts in the early spring for spring planting. After the harvest in fall, the greenhouse will be utilized in the winter months as a drying space and underground root cellar.



By listening to the needs of locals in the Crow Creek region, CAN-DO is developing a comprehensive plan to maximize the interest in managing individual and community accessible green houses.

This project will include:

- Construction – Community labor and donated materials combined.
- Community Training – Contributing partners and donors training locals in green house operations and management.
- Local Management – Greenhouses will be regulated within the community.





Community Thrift Store



-Peter Lengkeek is the visionary behind the Community Thrift Store and sees it as an instrument to help the community get back on its feet through restoring their dignity and pride.
-As a social entrepreneurial endeavor, the Community Thrift Store provides income generation opportunities and the ability for the community to have the resources required to survive at prices they can afford.



Partners: Tree of Life Ministries/CAN-DO

Budget:

Community Garden

Lead Organization: Hehaka sca Win Community Garden

Coordinator: Anisah David **Partners:** Tree of Life Ministries/CAN-DO

The Community Garden Program improves people's quality of life by providing a catalyst for neighborhood and community development, stimulating social interaction, encouraging self-reliance, producing nutritious food sources, reducing family food budgets, promoting sustainable economic development, and conserving resources.

Community gardening improves people's quality of life by providing a catalyst for:

- *Neighborhood and community development
- *Stimulating social interaction
- *Encouraging self-reliance
- *Producing nutritious food, reducing family food budgets
- *Provide and additional source of income and an economic base with employment opportunity and training



Budget:

Food Pantry

-Improve living conditions, health, and nutrition through improving access to nutritious foods while simultaneously providing additional revenue channels for the community. This will also serve as a means of production for their cannery business which is directly linked to the Community Garden.

Partners: Tree of Life Ministries, CAN-DO, Tuull Dimtu Organization, Anisah David - (Cont-pg14)

Budget:





Veterans Lodge

American Indians have participated with distinction in United States military actions for more than 200 years. Their courage, determination, and fighting spirit were recognized by American military leaders as early as the 18th century.

American Indians have volunteered to serve their country at a higher percentage in all of America's wars and conflicts than any other ethnic group on a per capita basis. They have earned and should receive the full recognition of their service to the nation.

CAN-DO has joined with Courage Community and the Aviation Union to create the Veterans' Lodge of the Crow Creek Reservation to honor the service of these brave individuals.

-The Veterans Lodge provides a gathering place for local member veterans to facilitate conversation and identify issues important to them and serve as a common place of various social activities and mental health services for members and their families.

Partners: Courage Community/Aviation Union/CAN-DO

Budget:

Veterans Memorial

"We come from a long line of warriors. We all served. It s who we are. We protect our people and our lands. It s the honorable thing to do."

Partners: Courage Community/Aviation Union/CAN-DO

Flags are a Symbol of Pride in the Native American Culture.



Budget:

The Crow Creek Veteran Memorial, is a tribute to the Crow Creek Sioux Tribe Indian tribe in South Dakota and the extraordinary value of their wartime service to our Nation. The Veteran Memorial will serve as a catalyst for social change, uniting communities to honor all of the Native Americans, and their compatriots who have bravely served.

The Crow Creek Veteran Memorial will consist of 9 flags, each representing a war in which representatives from the Sioux Tribe served. Etched into the Bronze flag poles, will be the names of each man, woman and child who has served, or is currently serving in the military. Each flag carries a symbol of a particular war, honoring the service Sioux Nation's contributions and service to our great nation as a whole.

The field is organized with Flags as a timeline of each community member's time of service... moving from the most recent to the oldest. Each flag featured in its unique placement within the collective field.

The construction of the Crow Creek Veteran Resource Center is a part of a unified effort to restore the Sioux Nation's heritage and re-ignite positive change within and throughout the Native American Community[CSL4] .

Each memorial flag is specifically positioned in order to distinguish service members.

The simple but elegant display, each person's name is a permanent inscription of one's service. Amid the gardens and the trees (Community Garden) contributes to the atmosphere of peace and remembrance; a symbol of growth and community enhances each visitor's personal experience.





Mentoring Program



Passing information and skills from generation to generation has been a core component of American Indian culture for centuries. By developing the Mentoring Program, CAN-DO seeks to restore these practices resulting in the strengthening of the next generation through capacity building and skill transfer and the community in its entirety.

The mentoring program also provides the opportunity for youths and communities to preserve the skills of traditional cultural artisanship which helps to develop awareness and respect for these traditional cultures. These skills help to develop vitally needed jobs based in ethical business practices, as well as enabling them to be the cultural stewards for their community.

Partners: Peter Lengkeek/Tree of Life

Budget:

Women's Outreach

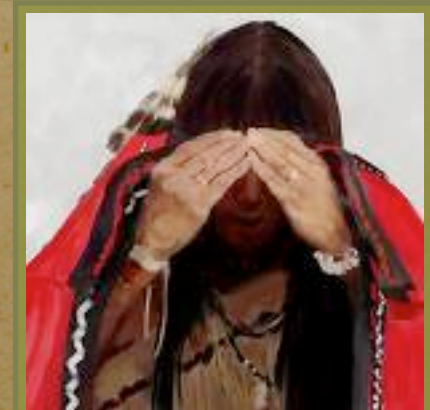
Partners: Courage Community

Budget:

Early Native American societies revered women as the life-giving force to future generations. They were the foundation and the pride of Indian culture. Many songs and myths passed down from generation to generation, as the phrase, "Mother Earth" when making reference to gifts provided by nature. Because life begins with birth and mothers nourish that life, it seems fitting that numerous Indian legends tend to include women when referring to their origin.

The ultimate achievement for a woman in Native American societies is being a mother and rearing a healthy family. Even though many Indian women attained distinctions as religious practitioners, "medicine women" and skilled artisans in craft work, in no way did these tasks affect their role as bearers and raisers of children.

This program dedicated to supporting the status of women by promoting women's education, community development, and income generation opportunities.





Micro-finance

Micro-finance provides a transitional step in restoring self-reliance through extending incremental loans to gradually help community members strengthen their financial literacy, management skills, and loan repayment capacities. CAN-DO is looking to integrate micro-finance into the Crow Creek Revitalization program to assist in the sustainable economic development. The Micro-enterprise strategy has been key to economic development in the neighboring Pine Ridge community, creating over 800 jobs for area workers and helping lift many families out of poverty. And new businesses mean that residents can do more shopping close to home which further strengthens the local economy.



3-1-09

We need your involvement, input, and contribution to bring this project to life. The programs listed in this project outline are continuously growing and evolving. We will be updating this overview regularly as new organizations, individuals, and teams join us. Budgets, video documentation of progress, photos, and other detailed information will also be made available regularly at www.can-do.org.

*We need your help to revitalize this community and demonstrate that together, we CAN get this done!
Our nation needs you.*

Thank you and we look forward to working with you!

Eric Klein
Founder, CAN-DO





CODE OF ETHICS

In having the opportunity to work in the Crow Creek Reservation, we are committed to upholding the culture, community, and respect of the people, the environment, and the traditions therein. As we embark upon this community revitalization effort, it is imperative to have a comprehensive Code of Ethics to which we all commit for the benefit of the community, the participating organizations, and to uphold the integrity and results of the programs.

We hereby pledge to:

1. Work in collaboration with the Crow Creek Community and aligned organizations to reestablish and develop sustainable resources, socially and economically, and maintaining consistent and regular communication with all parties involved to ensure the highest levels of professionalism, efficiency, and efficacy. Communication is vital to also ensure that there is no duplication of efforts or unnecessary overlap.
2. Provide an opportunity for organizations to work together in a collaborative manner, regardless of faith, for the betterment of the reservation and the betterment of humanity.
3. Provide an opportunity for concerned individuals to serve the Crow Creek Community. Any organization or individual should be accessible and responsive to the members of the public who express interest in the affairs of the organization.
4. All groups and individuals agree not to distribute religious material, preach, or in any manner proselytize while on or working with any members of the Crow Creek Community or the aligned organizations. It is imperative to commit to recognize the need to address the critical issues of the community as the top priority while respecting the difference of others, be it race, creed, religion, belief systems, or any other matter.
3. Volunteers can not take photographs or video tape without the consent of community leaders and/or parents of children under the age of 18.
4. All volunteers and groups commit to upholding the highest levels of environmental respect and stewardship on or around the reservation.
5. All programs created through this model need to be designed to be easily created and sustained by the local community with outside guidance and collaboration consistently available. All such programs are not to be designed for the economic benefit of the organization, but purely for the benefit of the people of the Crow Creek Reservation.
6. Always focus on empowerment, training, and knowledge transfer and teach rather than “handout or give.”
7. Keep all commitments and not make any promises that can not be fulfilled.
8. All people engaging in this program commit to preserving personal freedoms of both themselves and others and upholding the Universal Declaration of Human Rights.
9. All operations respect the rights of beings of all races, religions, creeds, ideology, languages, and status - including that of the environment and indigenous species.
10. To understand the history of exploitation that has occurred in this community and to pledge to stop this from happening in any way possible through maintaining vigilance, respect, and caution when cooperating with local communities to improve the conditions.
11. Any organization or individual(s) engaged in promoting public participation in the community’s affairs, should be diligent in assuring that the activities of the organization are strictly non-partisan. All organizations also must uphold transparent accounting practices and ensure ethical, efficient management of the project’s allocated resources.

Signed:

Date:

Fax- (818) 530-5393

Project Crow Creek Partners



If you are an organization or individual and there is a project you would like to participate in or offer your services or participate in any project below please contact administration@can-do.org or ek@can-do.org
The Crow Creek Reservation is depending on you to help ensure the success of this overall project

Youth Activity Center



***CAN-DO/Eric Klein**
578 Washington Blvd. Ste. 390
Marina Del Rey, CA 90292
Email: administration@can-do.org
Phone: (877) CAN-DO97 (226-3697)

Alternative Energy



***Wisconsin Energy Conservation Corp/**
Dan Agne
431 Charmany Drive
Madison, Wisconsin 53719
P 608-249-9322 x335
www.weccusa.org



***Green2Gold**
Alan Tratner
www.green2gold.org

Community Greenhouse Initiative

***CAN-DO/Cosmo Pfeil**



Thrift Store



Veterans' Lodge & Memorial



***Courage Community/**
Carlana Stone
1146 N. Central Ave. #405
Glendale, CA
www.couragcommunity.org

Micro-finance



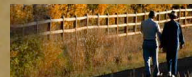
***Christie Communications/**
Alissa Sears
800 Garden Street, Suite B
Santa Barbara, CA 93101
805-969-3744

Community Garden

***Wenger Gallery/Coordinator Anisah David**

***Hehaka sca Win Community Garden**
c/o Lisa Lengkeek
530 S St John,
Fort Thompson, SD 57339

***Tree of Life Ministries**



140 S. Roosevelt, PO Box 149
Mission, SD 57555
605-856-4266
treeoflife@gwtc.net

***Native Nations**

***Rainstree Nursery**

***Bay Creek Traditionals**

***Grand Council of Indigenous Grandmothers Society**

***Tuull Dimtu**

***Flandreau Sioux Tribe**

Women's Outreach

